

**You shared,
we listened,
we made a difference
together**



West Cheshire

Poverty Truth

Final Report:

West Cheshire Poverty Truth
Commission 2017/18

This final report has been created by the Institute for Public Policy and Professional Practice (I4P) at Edge Hill University to consider and reflect on the key learning from the development stage of the West Cheshire Poverty Truth Commission (WCPTC).

The purpose of this report is to follow on from our February 2018 'Briefing paper: learning from developing the West Cheshire Poverty Truth Commission.' It will detail the achievements and outcomes from the first Poverty Truth Commission (PTC) in west Cheshire.



Contents

The West Cheshire Poverty Truth Commission	4
Deciding on Priority Areas	5
Beginning the Work	6
Sub-Group: Mental Health and Wellbeing	6
Sub-Group: A Person Centred Approach	7
Sub-Group: Benefits System	10
Wider opportunities for PTC Commissioners	11
Work with Joseph Rowntree Foundation (JRF)	11
Media Opportunities	11
The Celebration Event	12
Reflections on the Commission and Learning from the first WCPTC	14
Areas for Reflection and Learning	16
Where next?	19

The West Cheshire Poverty Truth Commission

This final report seeks to draw out the learning from the eighteen months of West Cheshire's Poverty Truth Commission.

The report reflects on the participatory process of developing, launching and delivering the commission. West Cheshire Poverty Truth Commission (WCPTC) was launched in February 2017 when fifteen residents, now called Community Inspirers came together with a number of civic, business and faith leaders to develop real solutions to problems faced by those in poverty. Community Inspirers were recruited to a broadly representative sample of the west Cheshire population via existing relationships that were held with Cheshire West and Chester Council and voluntary organisations. With the aim of tackling and eradicating the root causes of poverty, WCPTC differs from the norm in that it ensures that people with first-hand experience are at the heart of how the borough thinks and acts in tackling poverty and inequality.

“WCPTC differs from the norm in that it ensures that people with first-hand experience are at the heart of how the borough thinks and acts in tackling poverty and inequality.”

“Visiting the foodbank was the lowest part of my story”

#westcheshireptc

Client Signature
(on receiving voucher)

Client Signature
(on returning food)

Instructions for use:

- 1) Complete the details on the reverse. Where the cause of crisis is requested, please indicate what you believe to be the most common reasons for foodbank use in West Cheshire.
- 2) Hand in to one of our volunteers at the Foodbank station. Voucher must be redeemed to receive your lunch today.

Food bags for families can be VERY heavy. We encourage you to find help getting home.

On receiving food you agree to treat foodbank volunteers with respect, as they in turn respect you. Failure to do so will result in the number of foodbank vouchers being issued. Aggressive behaviour will result in police attendance.

Deciding on Priority Areas

West Cheshire Poverty Truth Commission was chaired by David Briggs, Lord Lieutenant of Cheshire. Additionally, there was significant support from Cheshire West and Chester Council, who committed a budget to fund a small delivery team to support the PTC process.



The first informal meeting of the Community Inspirers and civic, business and faith leaders was at a showing of the Ken Loach film, *I Daniel Blake*. The event was hosted at a local community centre and after the film, a discussion was facilitated by I4P asking the group to consider what a 'Good Society' might look like. The first meeting of the PTC was held in March 2017 and by May 2017 the commissioners had agreed to focus on three priority areas; Mental Health and Wellbeing, A Person Centred Approach and The Benefits System.

"PTC meetings were... shall I say, different from anything I had chaired before. There were no papers, no board table, everyone sat around in a circle and we all treated each other as equals." David Briggs, MBE, KStJ, Lord Lieutenant of Cheshire.

These three priority areas were agreed by a democratic voting process. Sub-groups were formed to focus on each of the three priority areas. Each sub-group was co-chaired by a Community Inspirer and a civic, business or faith leader. Conversations were initially facilitated by the PTC team, so that Commissioners could build effective working relationships.

Each sub-group took its own approach to deciding which issues it would concentrate on. They invited experts in relevant fields to talk at meetings, shared personal experiences, mapped out key issues and discussed what success might look like.

Beginning the work

Sub-Group: Mental Health and Wellbeing

Improved Access to Mental Health Support Services

You in Mind - www.youinmind.org: This website existed within Cheshire East and the PTC felt that the website would be very helpful for residents in Cheshire West. The PTC worked with You in Mind to expand the website to cover Cheshire West and invited the founder, Kate Carney to speak at the celebration event, offering an opportunity to advertise its existence and expand its network.

Assisting where there are gaps in service:

Advocacy Training:

A small selection of Community Inspirers attended advocacy training with a local charity, Turning Point, and are now volunteer advocates for them. Turning Point works with communities across mental health, learning disabilities, substance misuse, primary care, the criminal justice system and employment, providing specialist services to improve lives.

Peer Support Groups:

Having listened to stories regarding the benefits of peer support, the PTC visited local projects and identified a need for mental health peer support in the Northwich area. As a result, the PTC is helping to set up a peer support group in Northwich.

Better Partnership Working:

Through listening to the lived experiences of PTC commissioners with a dual diagnosis, service providers were able to facilitate a networking and partnership building opportunity with drug and alcohol and mental health support services. This meeting offered an opportunity to listen to people with lived experience of a dual diagnosis and for services to consider what an improved experience for those with a dual drugs / alcohol / mental health diagnosis might look and feel like. By involving a range of agencies in the work of the PTC, conversations were started.

These conversations helped to develop a more joined up approach to delivering services, and by having the benefit of lived experience in the room, clients perspectives were given voice. This led to better partnership working between a multitude of agencies. This improved partnership working with the PTC and other groups has led to PTC representation on the Mental Health Partnership Board.

Inspiring Angels:

This project was launched at the celebration event with the aim of helping to support people with mental health and/or addiction issues. Through this project members of the community are encouraged to help to find recovery through dance and movement. The project is being led by Fallen Angels Dance Theatre.

Improved Understanding of Mental Illness

The Community Inspirers experienced amazing changes in their self-confidence and improvements in their mental wellbeing whilst supporting the PTC. The key to this was 'listening'. Public services really need to listen and understand individuals and their experience of poverty, so services can better support them.

Mental Health Awareness Training:

The sub-group identified that training front-facing staff in public and voluntary sector organisations and communities would raise their awareness of the signs and symptoms of mental health and increase their skills and knowledge when working with people with mental health issues. As a result, training has been made available in the Ellesmere Port area for 300 front-line staff, with the aim of extending this across other areas once funding can be secured.

The Mental Health sub-group shared frustrations that the changes the PTC have enacted are a drop in the ocean, compared to the depth of need, particularly regarding long waiting times for services and gaps in provision. They questioned who can put pressure on mental health organisations and suggested that continued work was needed. They did, however, feel that they had made positive changes in the time-frame given and these are listed above.

Sub-Group: A Person Centred Approach

Developing Customer Voice: Working with the PTC enabled Wyvern House to recognise the customer as a key stakeholder and developed a customer voice focus group. This customer voice focus group will continue to work alongside the project to promote the importance of listening to those with lived experience and to develop a listening approach by public services across the borough.

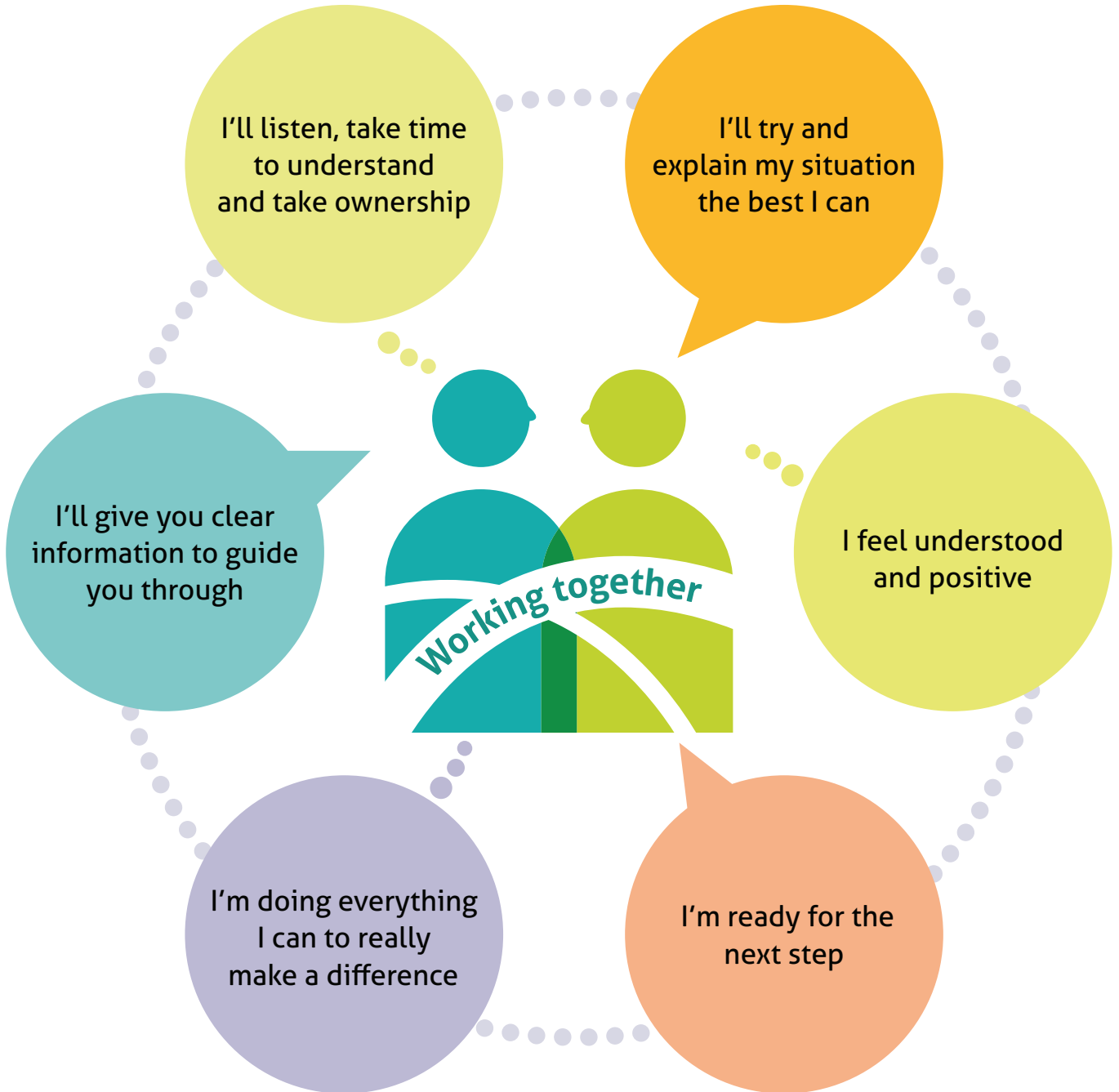
Cheshire West Navigator: During the PTC, the commission recognised there were a variety of services offered to those in poverty across many different organisations and this became confusing for an individual. A possible solution was to have a Cheshire West Navigator, where individuals can work with a Navigator and find out about all the services available to them, depending on their needs. The Navigator would then put them directly in touch with the relevant agencies. The PTC is working with Cheshire West and Chester Council and Cheshire and Wirral Partnership with the plan to pilot this new concept. The aim is that these navigators would be in a position to enable and direct individuals to the most appropriate help and support as quickly as possible.

PTC Pledge: Through listening to the Community Inspirers, many voiced negative customer service experiences when accessing benefit systems and support services. The lack of empathy and respect for people accessing these services had a negative impact on people's mental health and wellbeing.

The PTC worked collaboratively to address this issue, creating the PTC Pledge. The Pledge promotes honest and respectful treatment of all people, encouraging the development of positive relationships rather than transactional processes. The aim is that by signing up to this, organisations and the people within them become more self-aware, and are accountable for their behaviour.

The Department for Work and Pensions (DWP) (Cheshire) has worked with the WCPTC over the past year and signed up to the Pledge. DWP (Cheshire) has made positive changes to their services, following feedback from the Community Inspirers. They are creating best practice in Cheshire with the hope that other areas from around the country will also adopt the Pledge to improve the overall customer experience, treating people with dignity and respect.

"I pledge to treat you how you want to be treated"



Respect is a two-way street

Who's signed up to the PTC Pledge:

Cheshire West and Chester Council
Groundwork Cheshire
Department for Work and Pensions (Cheshire)
EPNAVCO
Weaver Vale Housing Trust
Diocese of Chester Church of England
Pennysmart CIC
Turning Point
Brio Leisure
Urenco
Active Cheshire CIC
For Housing
Cheshire Agricultural Chaplaincy
Cheshire and Wirral Partnership (CWP)
United Reformed Church Mersey Synod
Save the Family

All the above organisations have committed to demonstrating how they will embed these values within their organisations. One example is Brio Leisure. As part of their commitment to the Pledge, Brio Leisure has given Community Inspirers a one year free membership pass in return for mystery shopping their experience. This will ensure that Brio staff are enacting the values of the PTC Pledge.



Sub-Group: Benefits System

Changes in Housing Benefits letters: The PTC has worked with Cheshire West and Chester Council to change the wording of Housing Benefit letters to make them more understandable and customer friendly for clients.

Suggestions from Inspirers included:

- organise the letter so it is easier to read – perhaps use bullet points
- make an offer of assistance
- make the letter more personal
- don't use difficult words or phrases, e.g. defective claim
- make contact numbers prominent.

Letters have now been re-designed taking on board all of the suggestions and letters now include the line "Please do not ignore this letter – Act Today!" to prompt customers to return the requested information sooner.

Skills Training for Community Inspirers:

Pennysmart CIC has made available a range of skills training. This will enable Community Inspirers to develop the skills that they have gained through involvement in the PTC Process, which will help increase opportunities and help them to continue their community work in a voluntary or paid capacity.

Contributing to Policy: Written evidence was submitted by the WCPTC to the Work and Pensions Select Committee.

House of Commons: In January 2018 Justin Madders MP sponsored the WCPTC to attend the House of Commons and present their stories. The event focused on three key areas - Benefit Sanctions, Universal Credit and PIP Assessments. Their stories were emotive, inspiring and challenging. The stories shared the difficulties and frustrations of the Community Inspirers lived experience of poverty and the work of the WCPTC. Their presentations offered proposed solutions and championed the PTC approach; the value of listening and involving those with lived experience in key decision making. The event was a real success with several MPs and their officers attending, further developing the network and voice of the WCPTC Commissioners.

GP Engagement Strategy: The DWP have developed new links with the Cheshire Clinical Commissioning Groups (CCGs) and are, as a result, working more closely with GP practices. The NHS and DWP are building stronger relationships and aim to work together to support people back into employment. This will also lead to a GP forum, working with both trainee GPs and experienced GPs to improve the knowledge shared across the two organisations. This team will work with organisations within Cheshire and seek to continue the good work that has been achieved as a part of the PTC.

Local Offer: PTC members wanted a directory of support services available for those looking for mental health support. The Local Offer is a local government run directory that exists in Cheshire West and Chester, providing information and services for adults and children in the borough. The WCPTC sub-group worked with Cheshire West and Chester to improve the Local Offer website and continue to work with the Local Offer to make it more accessible, improving the information offered on the site. Following a workshop with PTC members and mystery shopping by Community Inspirers, updates and improvements made to the current Local Offer include: information in relation to sanctions and the HELP programme, improved search functionality, out of date information removed and contact details updated where appropriate.

Wider opportunities for PTC Commissioners

Work with Joseph Rowntree Foundation (JRF)

West Cheshire Poverty Truth Commission have developed an excellent working relationship with JRF, attending National Poverty Truth Network meetings and participating in the On Road Media pilot project as well as becoming involved in a steering group to learn from the PTC nationally.

Media Opportunities

December 2017: One Inspirer successfully contributed to an article about the Joseph Rowntree Foundation (JRF) State of the Nation report and featured on both the BBC News at six and the BBC Radio Two Jeremy Vine Show. West Cheshire Poverty Truth Commission was contacted by JRF who wanted Community Inspirers to work with the media, in order to highlight the real life stories behind their latest State of the Nation

report (published early Dec 2017). The report highlighted the struggle for working families and the Community Inspirer was able to share her experience of a zero hour contract, low pay, the impact of unreliable hours and how she tried to negotiate these unreliable hours with the high cost of childcare. JRF shared with West Cheshire Poverty Truth Commission that it was the best coverage they had ever had.

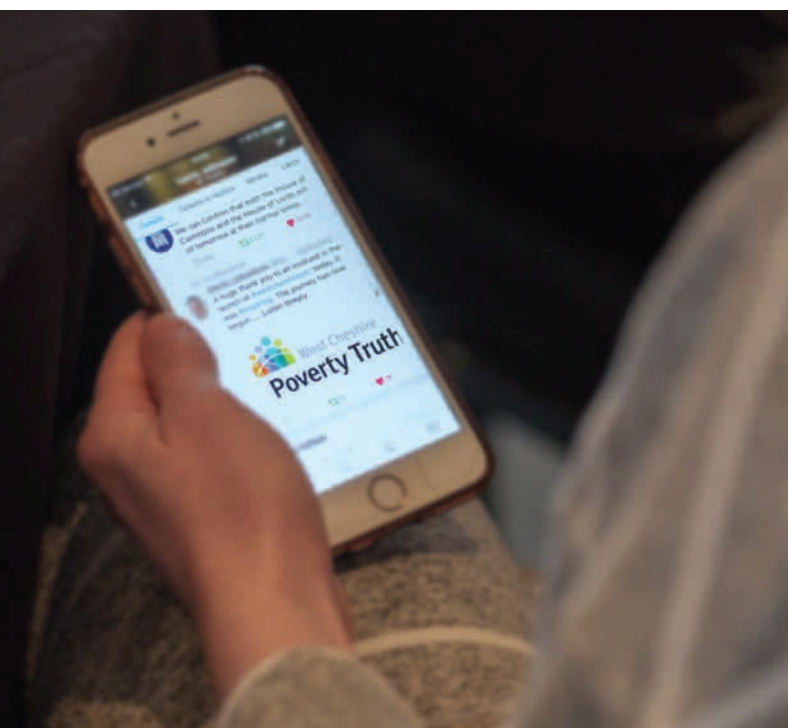
January 2018: PTC Commissioners have featured on the North West's Sunday Politics Show, sharing their lived experiences and discussing their work with the Poverty Truth Commission.

May 2018: PTC Inspirers have also shared their stories and discussed possible root causes and solutions to poverty on BBC Radio Merseyside; Roger Philips' Show. The PTC Commissioners were invited onto the show because they were keen to hear more about the Poverty Truth process, why the Inspirers had become involved and what they and the commission had achieved.



The Celebration Event

In February 2018 a celebration event was held at Chester Racecourse to celebrate the success and achievements of the PTC. The event was attended by approximately one hundred and fifty people. The celebration event included presentations from the sub-group co-chairs on what each group had achieved, and speeches from the commissioners about their experiences of being involved and what they had learned.



Feedback from the Celebration Event

How has today made you feel?



80% happy



20% very happy

We are part of the Community Inspirers, the PTC
What an amazing experience, I think we all can agree
My whole life I never imagined I would be on the news, the BBC
I'll tell you what tho the amount we drunk in coffee and tea
Causing endless trips to the toilet, needing a pee
Returning back to resume our positions, in guiding others to see what we see
But on a serious note, there was no other place I would rather be
As everybody simply accepted me for me
This time last year, it only just begun
Although very serious, I didn't realise it would be this much fun
I felt I was a part of something massive, even
when the weight of the world felt like a tonne
A wonderful bunch of people were there to see me when I won
Ok, so then we had a new member, the PTC baby to join the crew
Everyone accepted him and enjoyed a cuddle and coo
He became a part of the meetings, he was involved in the process too
He even enjoyed his first trip to the zoo
Finally, it's only took months to think of what to write
To turn my negatives into something bright
All these people were a spark to my light
I shall be sad to see this come to an end
But one thing for sure, we all made a friend
So to all I met on the way and those in need, love light and peace I send.

Karla, Community Inspirer



Reflections on the Commission and Learning from the first WCPTC

After the Commission ended, a learning and reflection session was facilitated by I4P, in April 2018. This session was attended by the PTC delivery team, Community Inspirers and civic, business and faith leaders. Overall, the feedback is felt that the WCPTC had done a good job. There was a sense of pride in what was felt to be a very positive process.

The Commissioners felt connected to everyone involved in the PTC. They shared that when they began the project they had felt excited and nervous, and that at points they had felt frustrated. The process of being involved with the PTC had built confidence, had been empowering and rewarding. The commissioners felt energised, inspired, humbled and hopeful about what it had achieved. Commissioners shared;

“[I have] enjoyed my involvement, as this was the most proactive committee I have had involvement with and enjoyed that things came out of it. The PTC has had positive outcomes, it wasn't a talking shop.”

Anne - Civic, Business and Faith leader

“I have gained confidence, I felt that my voice was heard. I have found myself and made a great group of friends.”

Karla, Community Inspirer

The Power of Voice

Being involved has enabled people to feel that it's ok to have a voice – that it's ok to overcome more barriers and move out of their comfort zone. The advice 'Never underestimate what you can do,' was shared by commissioners. Being involved in the process made commissioners feel important – like they had a voice. One commissioner in particular described how being involved had given her an opportunity that she had wanted for a long time;

“I wanted to change things, I wanted what happened to me not to happen to others.”

Barbara, Community Inspirer



Language and Listening

The language used within the commission was an area that could be improved. At times it felt inaccessible to Community Inspirers and made people feel uncomfortable. It was felt that culturally, we as a society need to start moving away from formal terms.

An area for development that one commissioner shared, was that it was important that all commissioners are supported to actively listen. It is important to know what it's actually like to be poor, actively listening and understanding how things are for people when designing services or support.

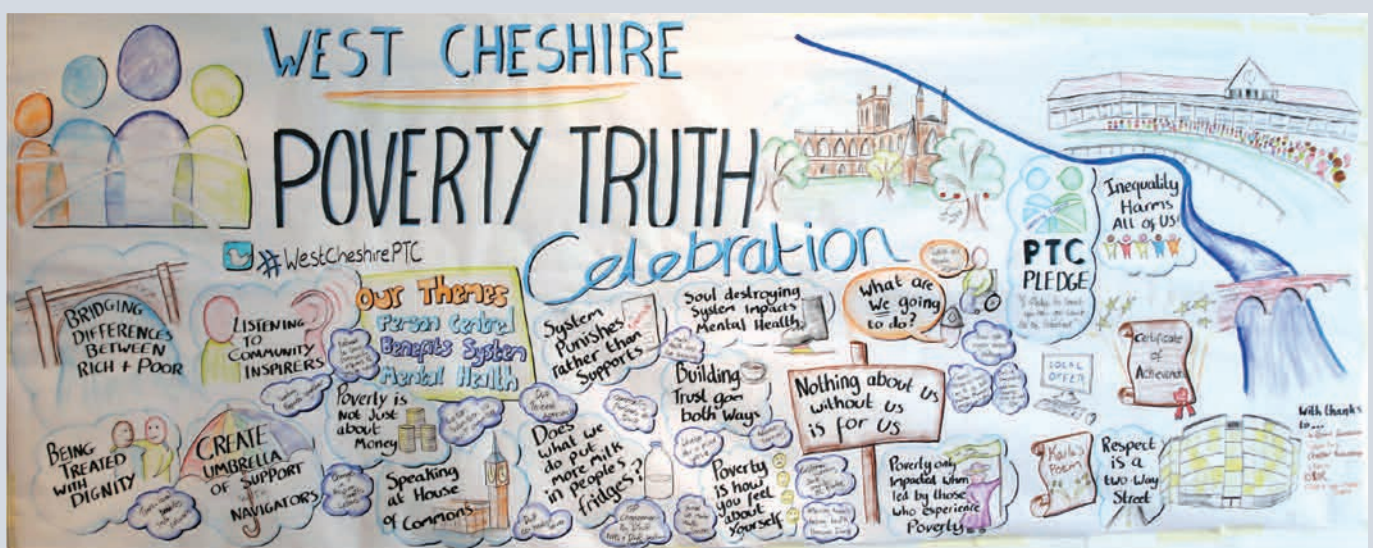
The Celebration Event

When reflecting on the celebration event the commissioners shared their pride at the journey that everyone had been on. The celebration event was felt to be an excellent way to show levels of confidence and how experiences had affected them. The commissioners shared WE are on a journey and that's only the start – the impetus needs to be maintained. The celebration event had very positive feedback.

'The celebration event just made everything seem real – there was so much...that I didn't know, for example what other sub-groups had done, so it was great.'

Debbie, Faith Leader

Some commissioners felt that they had been so busy with the work of the commission that they didn't have as much time as they would have liked to focus on the celebration event. One commissioner shared that at the celebration event, they felt anxious beforehand, as she was standing up and speaking in front of the audience, but she had enjoyed the event afterwards, once she had got over her nerves. She shared that she felt a bit sad and wistful at the celebration event, as she had enjoyed the process of the PTC and her involvement in it and was keen for the work of the PTC to continue.





Areas for Reflection and Learning

After the celebration event, time was spent with PTC commissioners discussing and confirming the learning. PTC commissioners reinforced the importance of valuing those with lived experience, relaying that it had built a sense of community and a real feeling of belonging. Community Inspirers leading the process is an important part of the PTC methodology. **The process of sharing stories and being heard was vital to the Community Inspirers.** PTC members wanted to recognise the amount of time involved in the process and that being a commissioner should be prioritised.

Maintaining relationships and keeping the same people involved throughout the process was important for the Community Inspirers in order to build strong relationships. The commissioners felt that they didn't know what to expect at the beginning of the process and that, with the second commission beginning, there were positive opportunities to support the new group of commissioners.

The PTC facilitation and budget was hosted within the Council and the PTC commissioners felt that this helped conversations with system leaders to begin change. Having such a high profile Chair, David Briggs, was felt by commissioners to be a helpful door opener. The Chair's connections has enabled links to be made across Cheshire.

The impact of the launch was important. The PTC Commissioners felt, perhaps prior the launch, there should have been a meeting to establish shared understandings. Mentors within the PTC Commission helped manage expectations. It was important to all commissioners that the PTC was not a twelve monthly wonder, but needed to consider the next steps that they might take. The journey of the Community Inspirers and civic leaders doesn't end when the PTC does and it is important to capture ongoing changes at organisational level. **Keeping in touch informally, participating in national forums with other PTCs and lobby groups, will keep everyone connected and help build on momentum.**

Areas for Reflection and Learning

- **It takes time:** It's important to recognise the amount of time involved in the process. The role of a commissioner is time intensive and being involved in the PTC needs to be prioritised. Mentors within the PTC Commission would be helpful to manage expectations of new commissioners.
- **It takes more time:** The Community Inspirers as a group of people needed a lot of pastoral care and support. This was very time and emotionally intensive for the PTC coordinator and facilitators, yet essential for the successful development of the project.
- **Who comes first?:** Bringing together a group that might become the Community Inspirers or developing trust and confidence in the process by political and civic leaders, or creating a steering group that could act as a broker of relationships to start the process.
- **Supporting transition from Community Inspirer to Poverty Truth Commissioner:** The small tight knit group of Community Inspirers that developed before the launch needed support to transition into Poverty Truth Commissioners. The PTC meetings were more formal and chaired. This transition could be improved by PTC facilitators running the meetings and making them more participatory.
- **Defining those agencies who have 'authority':** The PTC model – to be successful – needs private, public and not for profit organisations to work together. Local Government is the sole agency who can get decision makers in the room.
- **Working across boundaries:** The public/private/not for profit collaboration needs individuals who can work across the different organisational and institutional boundaries to secure the active support of faith, business and civic leaders and, at the same time, support the Inspirers. This requires a team with a range of skills and capacities.
- **Establishing shared understandings is key:** steering group, civic, business and faith leaders and Community Inspirers didn't always have the same shared understandings of what the PTC was about. Establishing these shared understandings from the outset is essential.
- **Relationship building:** The mentoring that took place one-to-one between Community Inspirers and civic, business and faith leaders was very positive. Civic, business and faith leaders could be encouraged to share their story of why they are sat at the Poverty Truth Commission table, what their motivations have stimulated their interest. By making the story sharing process reciprocal, power is broken down.
- **Sustaining and managing expectations:** Each of the constituent groups involved in the PTC – the Community Inspirers, the civic, business and faith leaders, the steering group and those supporting and facilitating the process in west Cheshire had different expectations and assumptions about what could happen. How these were supported and / or managed was often un-resolved.
- **Managing tensions between wanting people to be real and not exposing themselves to risk:** As the group got to know each other there was a sense of trust and empowerment which led Community Inspirers to feel safe sharing their stories. Balancing the wish of the Inspirers to share the very real and distressing details of their experience and the duty of care towards them in terms of protecting their confidentiality and vulnerability at the launch was a challenge.
- **Enlarging the group supporting the Inspirers:** As the group became settled and focussed on the launch, it was necessary, at different times, to draw in individuals and members of the local authority's services and this required a re-visiting of the values and PTC model.
- **Linking the individual experience to the broader community experience of poverty:** The sharing of stories is an incredibly emotive means of explaining the experience of poverty to the launch. The risk is that it places the experience of poverty with the individuals when often it is a broader structural issue that needs to be addressed.



- **Balancing empathy and practicality:** The launch was an incredibly powerful event but it was perhaps so emotive that the response of the civic leaders was overwhelmed. Perhaps the civic leaders should have met Community Inspirers in advance and prepared their response.
- **The power of stories:** The personal experiences and the different ways in which they were presented meant that the Inspirers were able to be direct and connect with the audience: simple, direct and personal accounts are more powerful than anything.
- **Thinking about those who are present as well as absent:** The challenges and impact of poverty on individuals and families reminds us that we need to be mindful of reflecting different and diverse voices and experiences from young people, to LGBTQ and BME communities.
- **Sharing the journey side by side is as important as the destination:** Once the commission is launched, it is natural to immediately want to make changes and take action, but taking time to build relationships and to gather the understanding and support of the whole team, civic, business and faith leaders and community Inspirers is important.
- **What happened next?:** The power of the stories, the connections made on the day of the launch and the commitment from the civic, business and faith leaders made possible a sense of movement and change. Communicating what has happened since is key to understanding what happened and why.
- **From Inspirers to Commissioners:** Supporting people through this transition needs to be considered carefully, to keep them engaged. Meetings of the PTC can feel very different to the gatherings they have come to feel comfortable in.
- **Ambassadors for the PTC:** Thinking about the different roles that are needed to initiate change, support the Inspirers and facilitate networks and collaborative conversations suggest that no one individual should be asked to take on the roles. Creating a network of PTC Ambassadors, made up of people who have all been involved in the first PTC, might help sustain and shape the next phase of the PTC.
- **Chair or Sponsor?:** To have a commission sponsor who oversees accountability could create a more cooperative approach to the PTC process.
- **Learning the lessons across the UK – connecting internationally and making an impact:** The potential of the UK based PTC initiatives to share experiences, inform practice and build up an evidence base of insights and understandings is huge.

Where next?

The West Cheshire Poverty Truth Commission has been a process of culture change. The process has been about empowering voice within policy, aiming to change the way that policy operates. The focus of Poverty Truth Commissions, on the right to truth, the right of those with experience of poverty to a voice, is a slow but successful means of re-enacting democracy.

Key learning from the WCPTC has centred on time, language and accountability. The time invested by all involved in the PTC; Commissioners, facilitators, Chair and other supporting staff had been significant and key to its success. The language of the commission was important, at times, the first commission hadn't always got this right. The language used has included jargon or terms that are difficult to understand. The challenge for the second commission will be to manage the tension between using direct and plain language and of not over simplifying the complex and contested nature of the lived experience of poverty within a complicated political, practice and policy situation.

Accountability, how to maintain the impetus for change was a challenge for the PTC and will continue to be a challenge now that the first commission is complete. To continue to keep an eye on the work of the first commission whilst effectively facilitating a second independent commission, will involve time and commitment.



For the PTC to avoid being a 'twelve month wonder' and require long term accountability to organisational commitments it has achieved, such as the PTC Pledge, it will need ongoing support and perhaps regular follow up meetings. Perhaps alongside the next cohort of PTC commissioners from the second commission, the first commissioners might check on the Pledge and the updates to the local offer in a year and ask local people if it is working for them. Perhaps too, the first group of commissioners could support the new Inspirers, as they begin the second commission to ensure that they are treated in a person centred way.

The impact of the West Cheshire Poverty Truth Commission has achieved a lot, as detailed in this report, but its impact has also been broader than its outcomes. The process of giving a voice to people with experience of poverty leads to better decision making, at local and national levels. The plan is to take the learning from the experience of the West Cheshire Poverty Truth Commission from the local policy arena to the national policy arena. A second Poverty Truth Commission in west Cheshire will continue the successes of the first, and build momentum. As the national Poverty Truth Commission movement develops, they can work together to gather momentum and represent the diverse voices of people who are so often silenced in their experiences of poverty. The process of giving voice to those with experience of poverty is complex, emotional and fragile. It is a process which takes time, pastoral, financial and political support, but it is a process which is framed in the most basic principles of democracy; voice. The right to truth for all citizens is one that is fundamental to British values.



confident
empowerment
enthusiastic
growth involved
inspired
proud altruism
positive
information

For further information visit:

www.cheshirewestandchester.gov.uk/povertytruth
or email: WestCheshire.PovertyTruth@cheshirewestandchester.gov.uk



West Cheshire

Poverty Truth